

**Thursday 25<sup>th</sup> July 2019 1000hrs**

**Important information for all GP teams, Community Pharmacists, Community Nursing and Aged Care Facilities – Please share this with everyone in your team**

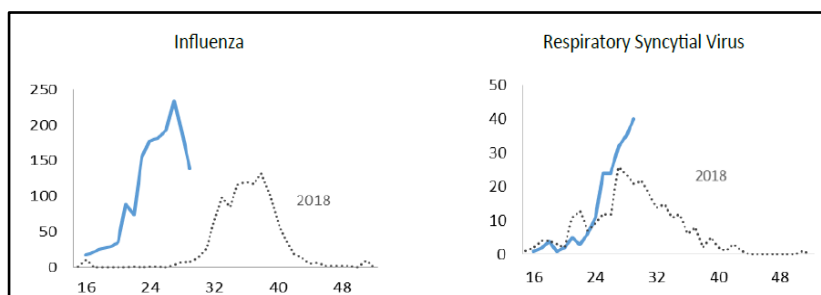
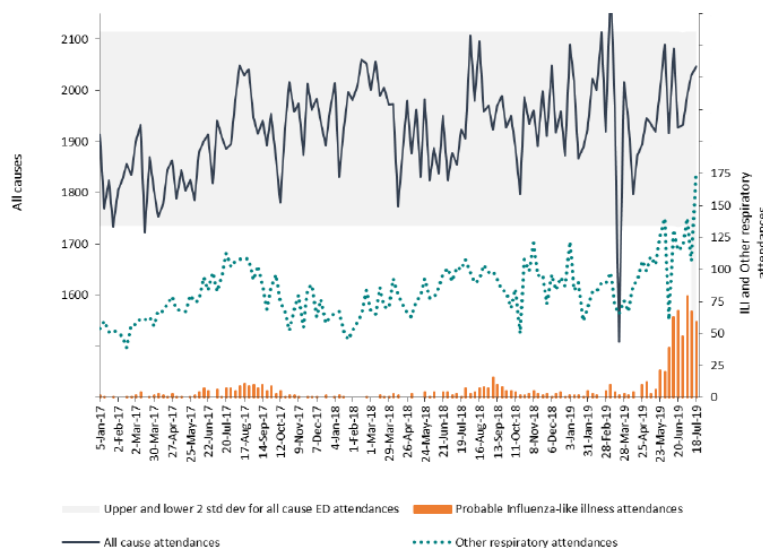
### Current Influenza Situation

- Canterbury data shows that the early wave of influenza persists. This continues to have a profound effect not only in Primary Care but also with Emergency Department presentations, Hospital admissions, ICU occupancy and Aged Care Facility outbreaks.
- The predominant strain, which the elderly are particularly susceptible to, remains Influenza Type A H3N2. Younger patients are, in comparison, tending to swab positive for Influenza Type B. It is possible that the influenza wave has peaked in Canterbury but we are monitoring this weekly.
- Conversely other respiratory viruses such as respiratory syncytial virus (RSV typically causes bronchiolitis) and coronavirus (typically causes sinusitis) are on the increase.

### Current Recommendations

- You are encouraged to continue your winter capacity plans including:
  - Vaccination programme for vulnerable patients and pregnant women (the latter through until December 2019).
  - Using booking systems to allow for same day triaged appointments and/or extended hours.
  - Ensuring good signage, masks, alcohol hand-wash availability for all presenting with coughs and colds.

**Christchurch Hospital Emergency Department attendances  
(from January 2017)**



**Positive influenza identifications**

Influenza type	This week	Last week
A(untyped)	103	144
B	36	44

Kind regards,

Dr Phil Schroeder  
Canterbury Primary Response Group

[www.primaryhealthresponse.org.nz](http://www.primaryhealthresponse.org.nz)